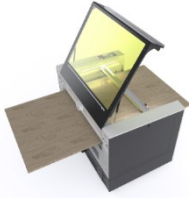


Class 4 Disclaimer

With the "Pass-Through Activation" accessory the Speedy 400 / Speedy 400 flexx (short Speedy 400) can be operated as a class 4 laser system.



The Speedy 400 can be opened at the front and back to process excess material.

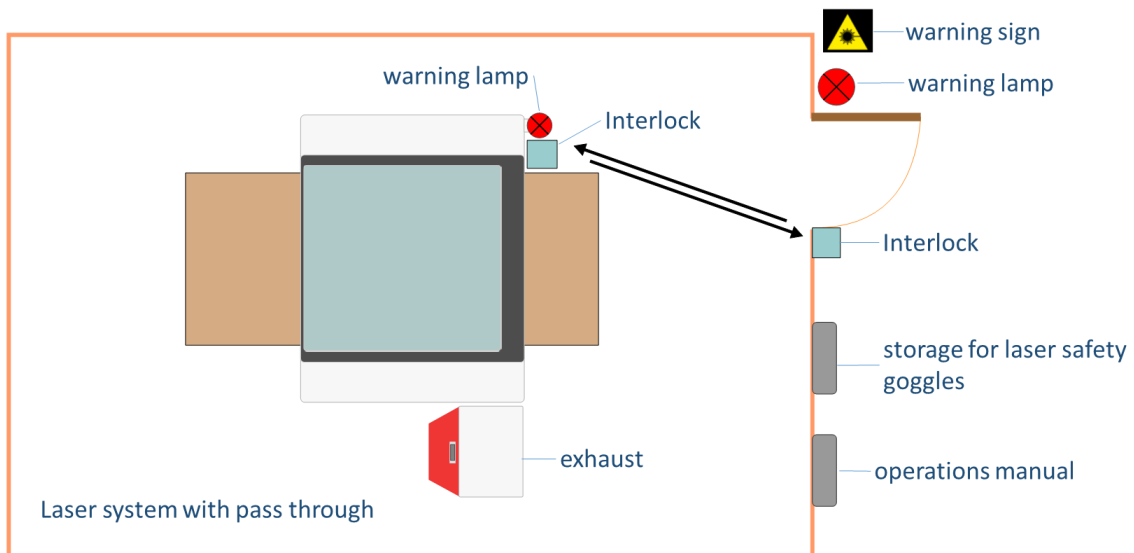
Schematic diagram (note: the cover is usually closed during operation)

If you operate your Speedy 400 with the hatch open, class 4 laser radiation can escape through these openings, which is dangerous particularly for the human eye and skin. In this operation mode the Speedy 400 is a class 4 laser system.

According to the Machinery Directive 2006/42 / EC, the owner/operator must take additional measures in the area to protect users and other persons in the operating room from laser radiation when operated in class 4 mode.

Trotec recommends at a minimum the following environmental safety measures for class 4 laser systems in accordance with EN IEC 60825-1:

- Appointment of a competent laser safety officer in writing to evaluate potential hazards and to ensure that appropriate control measures are implemented
- Installation of the laser system in a suitable laser protection enclosure (EN IEC 60825-4) or in a closed room with appropriate equipment.
- Securing the laser system and the room against unauthorized use
- Operators & staff in the same room as the laser system are instructed to wear personal protective equipment (e.g. appropriate laser safety glasses according to DIN EN 207)



Suggestion for marking and boundary of a room for safe use of a laser class 4 system

The purchaser / operator is responsible for the full compliance with any applicable national regulations.